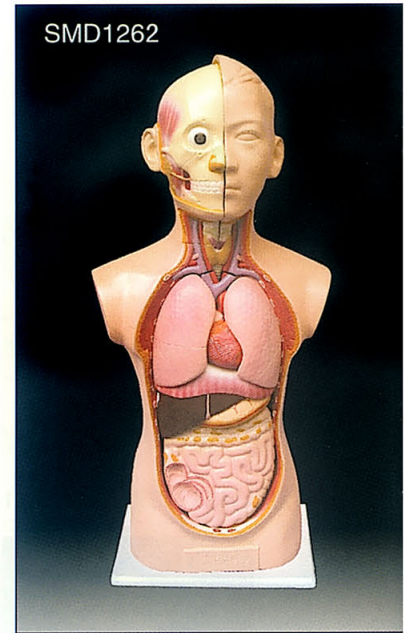
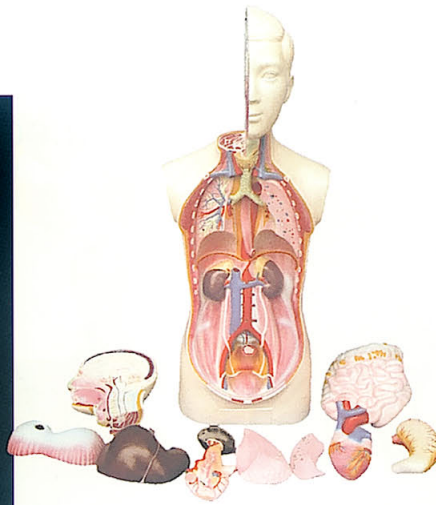


SMD1261



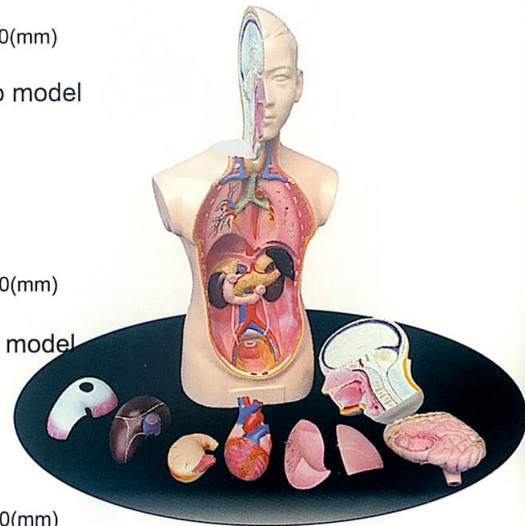
SMD1262

SMD 1261 Unisex Torso model

- ★ 1- lungs
 - ★ Heart
 - ★ Stomach
 - ★ Liver
 - ★ Intestine System
 - ★ Pancreas spleen
 - ★ Diaphragm
- DIMENSIONS:320 × 230 × 800(mm)

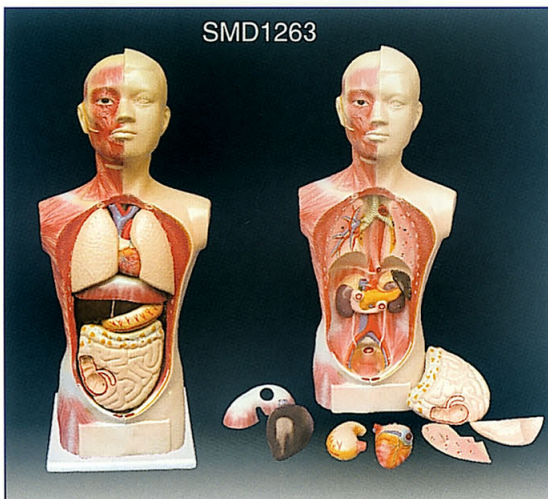
SMD 1262 Unisex Torso model

- ★ 2 lungs
 - ★ 1- part head
 - ★ 1- heart
 - ★ 1- stomach
 - ★ 1- liver
 - ★ 1- Intestine system
 - ★ 1- Diaphragm
- DIMENSIONS:280 × 180 × 650(mm)



SMD1263 Unisex Torso model

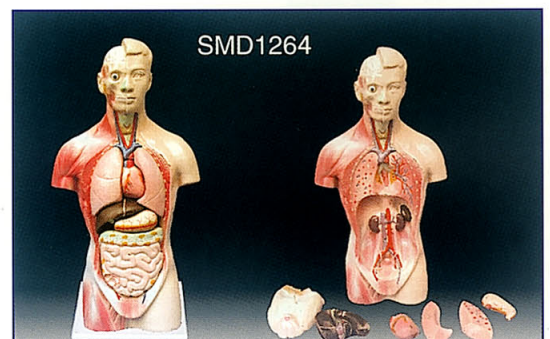
- ★ 2 Lungs
 - ★ 1- heart
 - ★ 1- stomach
 - ★ 1- liver
 - ★ 1- Intestine system
 - ★ 1- Diaphragm
- DIMENSIONS:220 × 140 × 520(mm)



SMD1263

SMD1264 Unisex Torso model

- ★ 2 lungs
 - ★ 1- heart
 - ★ 1-liver
 - ★ 1-stomach
 - ★ 1-intestine system
- DIMENSIONS:190 × 130 × 300(mm)



SMD1264