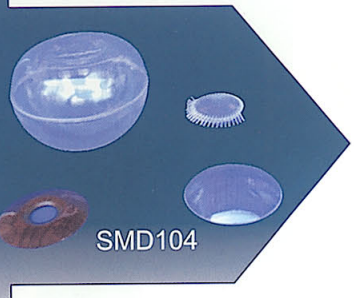




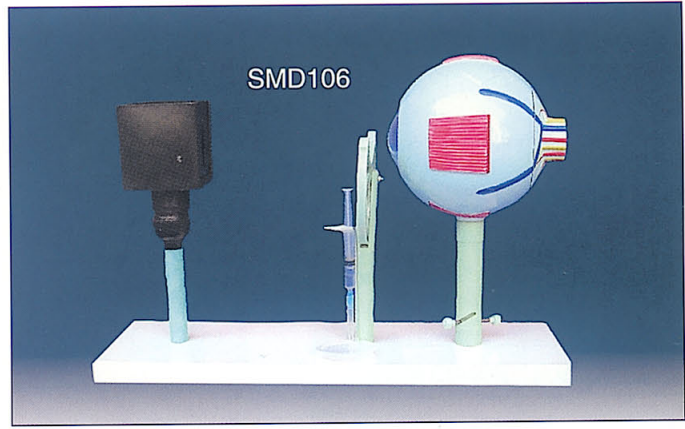
SMD103



SMD105



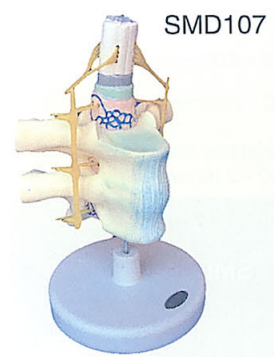
SMD104



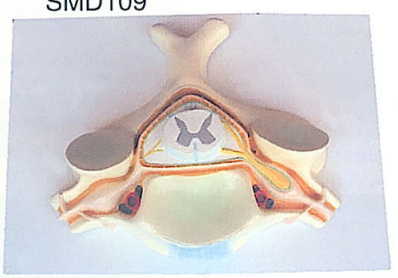
SMD106

SMD104
 Lens ,iris,cornea,vitreous body
 DIMENSIONS:125×125×95 (mm)
 SMD105:
 Model of the eye dissection
 DIMENSIONS:285×380×225(mm)
 SMD106:
 Model of the likeness of eyes
 DIMENSIONS:450×140×270(mm)
 SMD106A
 Functional eye,with changeable Lens
 DIMENSIONS:145×150×185(mm)

SMD103:
 Expansion model of the eyeball
 DIMENSIONS:150×120×160(mm)



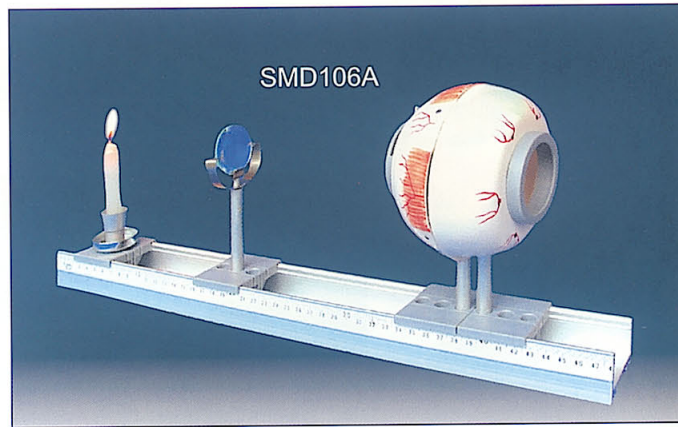
SMD107



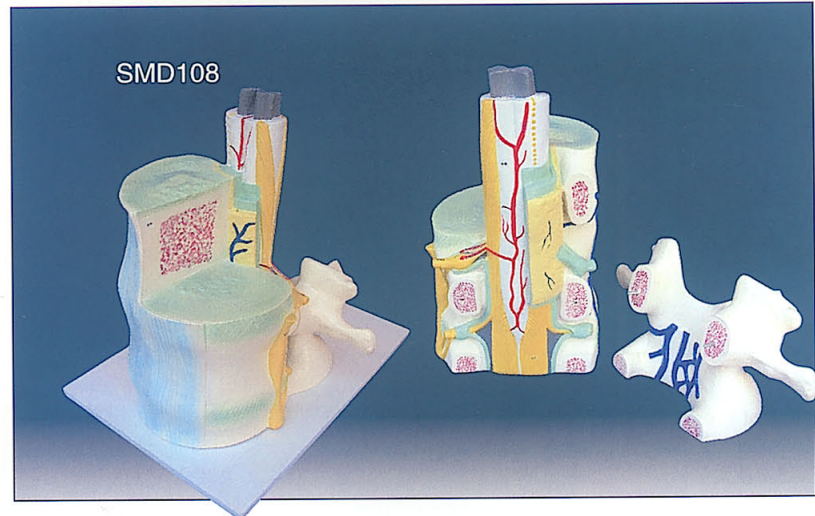
SMD109

SMD109:
 Specification nexus for human spinal cord and
 vertebral model
 DIMENSIONS:260×320×310(mm)

SMD107:
 Model of spinal cord and spinal nerves
 DIMENSIONS:160×140×170(mm)



SMD106A



SMD108

SMD108:
 Expansion model of transverse section of spinal
 cord and the vertebra
 DIMENSIONS:260×230×70(mm)



SMD110

SMD110:
 lumbar vertebral column model
 DIMENSIONS:120×120×350(mm)