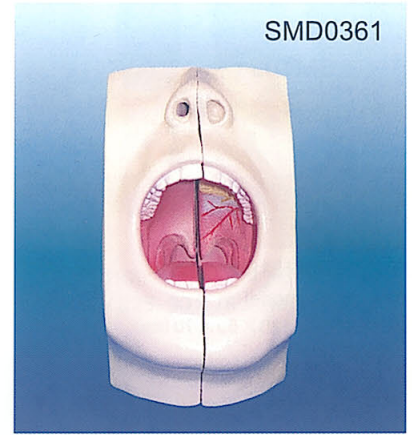
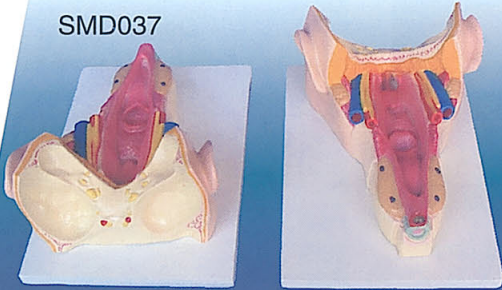


SMD0361
 Stomatological model
 DIMENSIONS: 170 × 105 × 130 (mm)
 SMD037:
 Model of the pharynx and larynx muscle
 DIMENSIONS: 230 × 170 × 100 (mm)



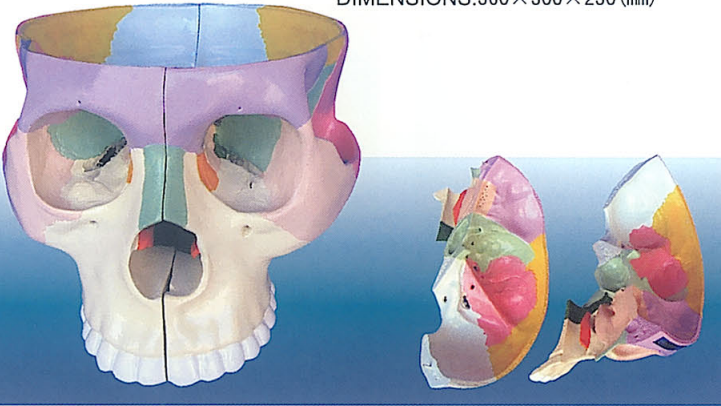
SMD037



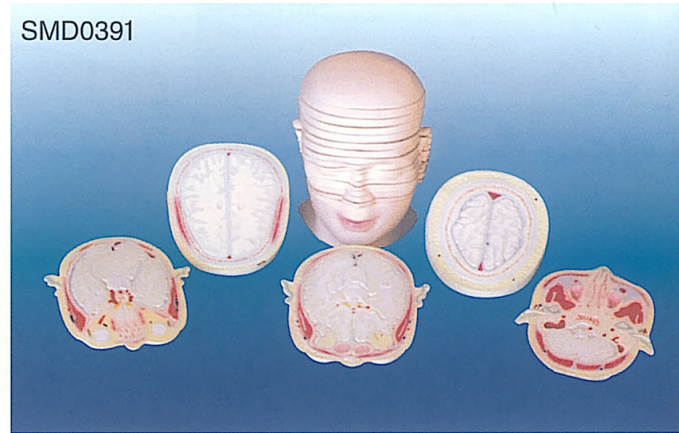
SMD0361

SMD038

SMD038:
 Expansion model of human cranium
 DIMENSIONS: 360 × 300 × 230 (mm)

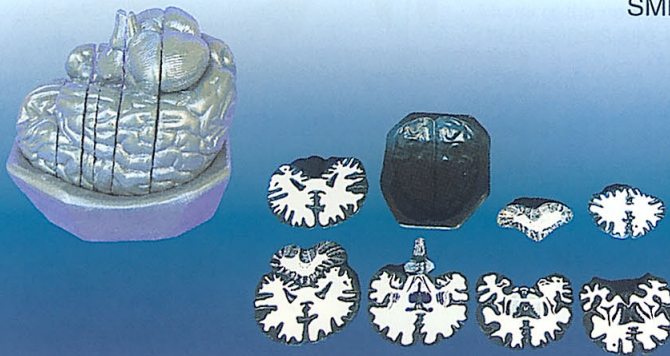


SMD0391



SMD0391:
 Horizontal sections of the head model
 DIMENSIONS: 190 × 175 × 245 (mm)

SMD039



SMD0392



SMD039:
 Coronal serial sections of the brain model
 DIMENSIONS: 170 × 140 × 170 (mm)

SMD0392:
 Horizontal sections of the brain model
 DIMENSIONS: 300 × 200 × 330 (mm)

